



Summer Assignment 2024-25

XII COMMERCE

Sanskar City International School, Rajnandgaon

Guidelines

- Submit the Assignments in Project file only.
- Treat this Assignment as a part of Curriculum.
- Only hand written assignments are allowed (No Print outs) Students have to submit it on or before 20th June 2024 without failure.
- In Case Of Issue /Difficulty, you are free to interact with the concern subject Teacher(s).

Sub: ENGLISH

ASSIGNMENT 1:

Write an 'Article' on "INDIA AS A POPULAR CHOICE OF FOREIGN VISITORS."

HINTS:

Importance:-

- The new influx generates jobs for local people
- Local culture, food and handicrafts promoted
- Medical, religious and ecosystem bring India on the world map.

What needs to be done:-

- Strengthening the efforts of the authorities
 - Media's role in creating awareness
- Information centres to be created for all tourists

Students are required to make a 'hard copy' in their English text copy. **Thereafter, they are required to make a Presentation in the form of video / PPT once school reopened.**

ASSIGNMENT 2:

Students should find at least **3 new WORDS each day**, (Monday to Friday); their meanings and usage with examples. On every Saturday, they are required to click the words written and post to the subject teacher, without fail, WHATSAPP NO: 9993680780

Note: *ATTRACTIVE PRIZE WAITS FOR THE BEST WORK!*

SUB:ACCOUNTANCY

Q.1 A and B are partners from 1st April 2018, without a Partnership Deed and they introduced capitals of ₹ 35,000 and ₹ 20,000 respectively. On 1st October 2018, A advanced loan of ₹ 8,000 to the firm without any agreement as to interest. The profit and Loss Account for the year ended 31st March 2019 shows a profit of ₹ 15,000 but the partners cannot agree on payment of interest and on the basis of division of profits.

You are required to divide the profits between them giving reasons for your method.

Q.2 A and B are partners in a firm sharing profits in the ratio of 3: 2. They had advanced to the firm a sum of ₹ 30,000 as a loan in their profit-sharing ratio on 1st October, 2017. The Partnership Deed is silent on interest on loans from partners. Compute interest payable by the firm to the partners, assuming the firm closes its books every year on 31st March.

Q.3 X and Y are partners sharing profits and losses in the ratio of 2 : 3 with capitals ₹ 2,00,000 and ₹ 3,00,000, respectively. On 1st October, 2018, X and Y gave loans of ₹ 80,000 and ₹ 40,000 respectively to the firm. Show distribution of profits/losses for the year ended 31st March, 2019 in each of the following alternative cases:

Case 1: If the profits before interest for the year amounted to ₹ 21,000.

Case 2: If the profits before interest for the year amounted to ₹ 3,000.

Case 3: If the profits before interest for the year amounted to ₹ 5,000.

Case 4: If the loss before interest for the year amounted to ₹ 1,400.

Q.4 Bat and Ball are partners sharing the profits in the ratio of 2 : 3 with capitals of ₹ 1,20,000 and ₹ 60,000 respectively. On 1st October, 2018, Bat and Ball gave loans of ₹ 2,40,000 and ₹ 1,20,000 respectively to the firm. Bat had allowed the firm to use his property for business for a monthly rent of ₹ 5,000. The loss for the year ended 31st March, 2019 before rent and interest amounted to ₹ 9,000. Show distribution of profit/loss.

Q.5 X, Y and Z are partners in a firm sharing profits in 2 : 2 : 1 ratio. The fixed capitals of the partners were : X ₹5,00,000; Y ₹ 5,00,000 and Z ₹ 2,50,000 respectively. The Partnership Deed provides that interest on capital is to be allowed @ 10% p.a. Z is to be allowed a salary of ₹ 2,000 per month. The profit of the firm for the year ended 31st March, 2018 after debiting Z's salary was ₹ 4,00,000.

Prepare Profit and Loss Appropriation Account.

Q.6 Prem and Manoj are partners in a firm sharing profits in the ratio of 3 : 2. The Partnership Deed provided that Prem was to be paid a salary of ₹ 2,500 per month and Manoj was to get a commission of ₹ 10,000 per

year. Interest on capital was to be allowed @ 5% p.a. and interest on drawings was to be charged @ 6% p.a. Interest on Prem's drawings was ₹ 1,250 and on Manoj's drawings was ₹ 425. Interest on Capitals of the partners were ₹ 10,000 and ₹ 7,500 respectively. The firm earned a profit of ₹ 90,575 for the year ended 31st March, 2018.

Prepare Profit and Loss Appropriation Account of the firm.

Q.7 Amar, Bhanu, and Charu are partners in a firm. Amar and Bhanu are to get an annual salary of ₹ 1,20,000 p.a. each as they are fully involved in the business. Net profit for the year is ₹ 4,80,000. Determine the share of profit to be credited to each partner.

Q.8 A and B are partners sharing profits equally. A drew regularly ₹ 4,000 at the end of every month for six months ended 30th September, 2019. Calculate interest on drawings @ 5% p.a. for a period of six months.

Q.9 Calculate interest on drawings of Ashok @ 10% p.a. for the year ended 31st March, 2019, in each of the following alternative cases:

Case 1. If he withdrew ₹ 7,500 at the beginning of each quarter.

Case 2. If he withdrew ₹ 7,500 at the end of each quarter.

Case 3. If he withdrew ₹ 7,500 during the middle of each quarter.

Q.10 Ram and Mohan are partners in a business. Their capitals at the end of the year were ₹ 24,000 and ₹ 18,000 respectively. During the year, Ram's drawings and Mohan's drawings were ₹ 4,000 and ₹ 6,000 respectively. Profit (before charging interest on capital) during the year was ₹ 16,000. Calculate interest on capital @ 5% p.a. for the year ended 31st March, 2019.

Sub:Business Studies

Q.1 Aman, Ahmad and Ally are partners in a firm engaged in the distribution of dairy products in Maharashtra state. Aman is a holder of Senior Secondary School Certificate from Central Board of Secondary Education with Business Studies as one of his elective subjects. Ahmad had done his post graduation in History and Ally in dairy farming. One day there was a serious discussion between Ahmad and Ally regarding the nature of management. Ahmad argued that management was a profession whereas Ally argued against it saying that the legal and medical professions are the only professions because they fulfill all the conditions of profession.

Aman on the basis of his knowledge of business studies explained the nature of management as a profession to Ahmad and Ally. Explain, how Aman would have satisfied both Ahmad and Ally.

Q.2 Sonali is the manager of a large company manufacturing garments for kids. She plans her winter collection in the month of August itself. Then, she ensures that there is adequate workforce. She continuously monitors whether production is proceeding according to plans. She asks the marketing department to prepare their promotional and advertising campaigns also.

- a) Identify and explain the concept of management explained in the above Para.
- b) What characteristic feature does the above Para highlight? State.

Q.3 H. Tech Ltd. is a company producing IT services. The company's profits are enough for the survival and growth. The management of the company believes that a satisfied employee creates a satisfied customer, who in turn creates profits that lead to satisfied shareholders. So, it pays competitive salaries and perks to its all employees. All the employees are happy working in the organization because of personal growth and development.

The company has a strong sense of social responsibility. It has set up an engineering college in which one-third of the students are girls to whom the company gives 50% scholarship.

Is the management of H. Tech Ltd. fulfilling its objectives? Justify your answer by giving reasons.

Q.4 . Sooraj works as a salesman in a company selling pet accessories and food. He has been given a target of selling 1200 units of the food packets in a month by offering a maximum of 10% discount to his customers. In order to meet his monthly sales target, on the last two days of the months, he offers 15% discount to his customers. In the context of the above case:

- Is Sooraj effective in his work? Explain by giving a suitable reason in support of your answer.

Q.5 Real Alliance Ltd. is a well-known cement company in India. It is able to earn adequate revenues to cover costs. Its capital base, number of employees and production turnover has increased manifolds over the years. The rate of profitability of the business is also creditable. The employees of the

company are happy and satisfied with their remuneration, working conditions, promotion policy etc. as a part of its moral obligation, the company has taken many initiatives for providing employment to specially abled persons and promoting literacy in the villages adopted by it.

In the context of the above case:

- a) Identify and explain the various types of objectives of management being fulfilled by Real Alliance Ltd by quoting lines from the paragraph.
- b) List any two values that real Alliance Ltd. wants to communicate to the society.

Subject : Economics

1. calculate following from the data
(A) National income
(B) GDP at MP
(C) NNP at MP
(D) GNP at FC

Compensation of employees	800
Mixed income of self employed	900
Net factor income from abroad	-50
Rent	350
Profit	600
Consumption of fixed capital	200
Net indirect taxes	250
Interest	450
Operating Surplus	1400

2. Difference between national income and domestic income.
3. Difference between personal income and personal disposable income.
4. what are the precaution while calculating national income through
(a) Income method
(b) Expenditure method .
(c) Value addition method.
5. calculate following from the given data
(a) Expenditure method
(i) National income
(ii) GDP at MP
(iii) NNP at MP
(iv) GNP at FC
(b) Income method
(i) National income
(ii) GDP at MP
(iii) NNP at MP
(iv) GNP at FC

Compensation of employees	1,200
Net factor income from	- 20
Net indirect taxes	120
Profit	800
Private final consumption expenditure	2,000
Net domestic capital formation	770
Consumption of fixed capital	130
Rent	400
Interest	620

Mixed income of self employed	700
Net export	-30
Govt. final consumption expenditure	1100
Operating surplus	1820
Employer's contribution to social security scheme	300

6. Distinguish between stock and flow concept of national income. Give an example of each.
7. what do you mean by double counting ?
8. what do you mean by GDP deflator ?
9. when is GDP of an economy equal to its GNP ?
10. what do you mean by money flow and real flow? Explain with the two sector economy ?

Subject : Informatics Practices (Students opted)

1. Consider the following table named "Garment" . Write command of SQL for (i) to (iv) and output for (v) to (vii)

Table : GARMENT

GCODE	GNAME	SIZE	COLOUR	PRICE
111	TShirt	XL	Red	1400
112	Jeans	L	Blue	1600
113	Skirt	M	Black	1100
114	Ladies Jacket	XL	Blue	4000
115	Trousers	L	Brown	1500
116	Ladies Top	L	Pink	1200

- (i) To display names of those garments that are available in ' XL' size.
(ii) To change the colour of garment with code as 116 to "Orange".
(iii) To display codes and names of those garments that have their names starting with ' Ladies ' .
(iv) To display codes and names of those garments that have price in the range 1000 to 1500.
(v) SELECT AVG(PRICE) FROM GARMENT ;
(vi) SELECT COUNT(DISTINCT (SIZE)) FROM GARMENT;
(vii) SELECT GNAME FROM GARMENT WHERE SIZE IN (' M ' , ' L ') AND PRICE >1500;
2. Write the output for SQL queries (i) to (iii) which are based on the table **ITEMS**.

Table: ITEMS

Code	IName	Qty	Price	TCode
1001	DIGITAL PAD 12i	120	XENITA	T01
1006	LED SCREEN 40	70	SANTORA	T02
1004	CAR GPS SYSTEM	50	GEOKNOW	T01
1003	DIGITAL CAMERA 12X	160	DIGICLICK	T02
1005	PEN DRIVE 32 GB	600	STOREHOME	T03

- (i) SELECT MAX(Price) , MIN(Price) FROM ITEMS.
(ii) SELECT Price *Qty AS AMOUNT FROM ITEMS WHERE Code = 1004 ;
(iii) SELECT MAX(Company) FROM ITEMS WHERE Price > 7000 ;
3. Write the output of the queries (i) to (iv) based on the table **FURNITURE** given below.

Table : FURNITURE

FID	NAME	DATEOFPURCHASE	COST	DISCOUNT
B001	Double Bed	03-JAN-2018	45000	10
T010	Dinning Table	10-MAR-2020	51000	5
B004	Single Bed	19-JUL-2021	22000	0
C003	Long back Chair	30-DEC-2016	12000	3
T006	Console Table	17-NOV-2019	15000	12
B006	Bunk bed	01-JAN-2021	28000	14

- (i) SELECT SUM(DISCOUNT) FROM FURNITURE WHERE COST >15000;
- (ii) SELECT *FROM FURNITURE WHERE DISCOUNT > 5 AND FID LIKE " T% " ;
- (iii) SELECT DATEOFPURCHASE FROM FURNITURE WHERE NAME IN (" Dining Table", "Console Table");

4. Consider the following table.

Table: SOFTDRINK

DRINK CODE	DName	PRICE	CALORIES
101	Lime and Lemon	20	120
102	Apple Drink	18	125
103	Nature Nectar	15	140
104	Green Mango	15	135
105	Aam Panna	18	120
106	Mango and Juice Bahaar	12	150

Write the SQL queries for the following.

- (i) To display names and drink codes of those drinks that have more than 120 calories.
- (ii) To display drink codes ,names and calories of all drinks in descending order of calories.
- (iii) To display names and price of drinks that have price in the range 12 to 18.
- (iv) Increase the price of all drinks in the given table by 10%

5. Consider the following table **EXAM**.

Table:EXAM

NO	Name	Stipend	Subject	Average	Division
1	Mohan	400	English	65	FIRST
2	Kamal	600	Mathematics	72	SECOND
3	Javed	200	Physics	80	FIRST
4	Ramesh	800	Chemistry	40	THIRD
5	Praveen	400	Accounts	35	SECOND

Write the SQL queries for the following.

- (i) To display the name of those students , who have obtained Division as FIRST in the ascending order of NAME.
 - (ii) To display a report listing NAME, SUBJECT and Annual Stipend received assuming that the stipend column has monthly stipend.
 - (iii) To count the number of students , who have either Accounts or English as subject.
 - (iv) To insert a new row in the table EXAM:
6, "Karan", 500 ,"Informatics" ,45, "SECOND"
 - (v) To display the name and subject of those student whose average is greater than 60
-

Sub:Physical education (Students opted)

- Students need to start working on the Physical Education Practical file.
- Choose a Sport of your choice and work on it according to the instructions already given to you in the class.
- Please be neat in your presentation and Don't forget to underline important Headings and Topics.
- This File will be evaluated for your board exam.

Sub:Hindi (Students opted)

प्रश्न 1. अपने जीवन पर एक "पोर्टफोलियो" बनाएं।

प्रश्न 2. "भक्तिन" पाठ से संबंधित दिए गए 100 बहुविकल्पीय प्रश्न (डब्लूफ) के उत्तर छाँटकर लिखिए।

प्रश्न 3. "गद्य की विधाओं" में प्रत्येक विद्या को परिभाषित करके विस्तार पूर्वक लिखें।

प्रश्न 4. "पद्य की विधाओं" में से प्रत्येक विद्या को परिभाषित करके विस्तार पूर्वक लिखिए।

प्रश्न 5. "जूझ" (वितान) पाठ को पढ़ें, समझे व उससे संबंधित कठिन शब्दों को ढूँढ कर लिखें।

प्रश्न 6. "महादेवी वर्मा जी" का जीवन परिचय क्रमवार लिखें। (20 क्रम में) साथ ही साथ उनका साहित्यिक परिचय विस्तार पूर्वक लिखें।

प्रश्न 7. "तुलसीदास जी", "महादेवी वर्मा जी" अथवा "सूर्यकांत त्रिपाठी निराला जी" का सचित्र जीवन परिचय चार्ट पेपर में बनाएं।

Sub: Odissi Dance (Students opted)

Q.1 Prepare a video on Chaik Tribhang (Min.5step) and submit to Dance In charge.

Q.2 Prepare a biography report on Guru Shree Kelu Charan Mahapatra and his contribution to enrich the Odissi Dance Art.

Sub: Hindustani Vocal (Students opted)

Q.1 Prepare a report about the instruments used in Hindustani music with Pictures/Diagrams.

Q.2 Prepare a video which reflects the Indian music heritage with reference to Shastriya Ragas/Folk Music.

Sub: Artificial Intelligence (Students opted)

Activity-1

Draw your Dream home (includes AI devices)



Activity-2

Poster Making–Job Advertisement for 2029!

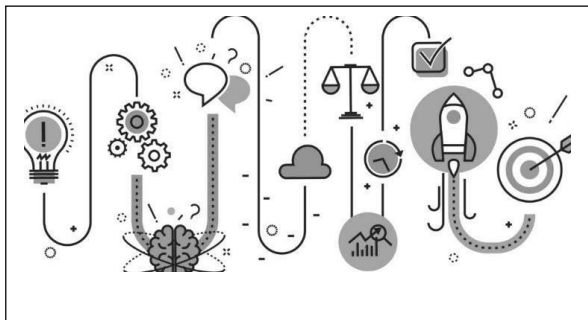
Here’s what you have to do:

- Search for current and emerging trends in employment to make a Future Job Advertisement. (Use A4 sheet for creation of **Job Advertisement**)
- The job description is for a job which will exist ten years from now, i.e. the current date.
- To help you, the job advertisement must include the following information.

Information about the hiring company	Required Skills- Vital, Essential And Desirable Skills
Is the company a startup?	Is the company a big Organization
Is this a community Project?	Share the reason why you choose this job or Jobs?

Analysis

List the kinds of futuristic job opportunities that would be available for you?



Write the skills you will require to do these jobs?

ACTIVITY-3

Problem: CBT is a technique used by most therapists to cure patients out of stress and depression. But it has been observed that people do not wish to seek the help of a psychiatrist willingly. They try to avoid such interactions as much as possible. Thus, there is a need to bridge the gap between a person who needs help and the psychiatrist.

PROBLEM STATEMENT TEMPLATE

OUR	STAKEHOLDERS	WHO
HAS/HAVE A PROBLEM THAT	ISSUE, PROBLEM, NEED	WHAT
WHEN/WHILE	CONTEXT SITUATION	WHERE
AN IDEAL SOLUTION WOULD	BENEFITS OF SOLUTION FOR THEM	WHY

ACTIVITY-4

Problem: People love to indulge in various kinds' food. This is a reason that you find restaurants everywhere. These restaurants serve food in many ways like A la-Carte and Buffets in-order to offer a variety to their customers. All kinds of Food Outlets prepare food in bulk, as they expect a lot of customers would come to enjoy the food every day. For most Food Outlets, at the end of the day, there is a lot of leftover food This food is a waste, as the Food Outlets don't intend to serve stale food to their customer's the nest day , to maintain their brand value. So, every day a specific quantity of food is prepared keeping in mind a probable number of Expected Customers, which might be more than the actual number of customers who visit. This leads to a good quantity of food getting wasted, everyday wastage if accounted for the whole year.

PROBLEMSTATEMENTTEMPLATE

OUR	STAKEHOLDERS	WHO
HAS/HAVEA PROBLEM THAT	ISSUE, PROBLEM,NEED	WHAT
WHEN/WHILE	CONTEXTSITUATION	WHERE
AN IDEAL SOLUTION WOULD	BENEFITSOFSOLUTIONFORTHEM	WHY

ACTIVITY-5

Letter of Future Self

Write one letter to your future what you want see in the future or what you want remind to your future. Just imagine about the next 10 years and what you are thinking about your future (elate with AI). The following points can be included in letter/email:

1. Start with your interests, hobbies ,and skills
2. Now relate how AI can help you
3. Write about your future job or career you want to pursue and how AI will make an impact on that